



imagine style, success and simplicity.

As an asset, the STN-460WEL is second to none. Samsung's image excellence, high style and technical precision will be a supportive partner on your journey. As LCD monitors and plasma screens become the industry standard, the STN-460WEL stand transcends the present, allowing you to project your profile into the future. Don't see the way, lead the way.



LFD Welcome Board

STN-460WEL



:: Built in Speaker

The built in speakers add another dimension. Incorporated audio in a stylish design makes the Welcome board the ultimate support system.

:: Pivot Display

Enjoy digital freedom. The multi tab function allows you to connect to other media devices with simplicity; stay connected with multi tab technology.

:: Built in Multi-tab

Realize your view on life and ensure your needs are met. Fully adjustable horizontal and vertical viewing positions enhance your comfort.

:: Not only is it compatible for LCD but also PDP

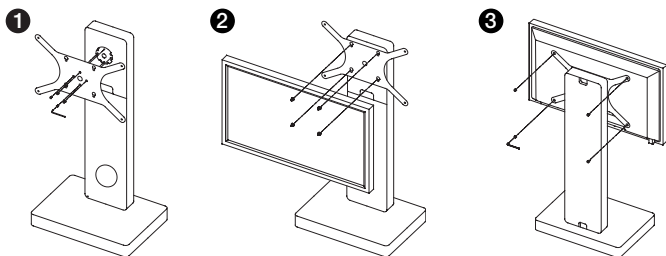
Fulfill your purpose; enjoy the best that life has to offer. Supporting PPM42M6H / PPM50M6H PDP Monitor and 400PX / 400PXn / 460PX / 460PXn LCD Monitor, design your display to suit your needs.

:: Elegant Design

The super stylish design puts the Welcome board in a class of its own. Incredibly able, spectacularly stylish; appreciate the ultimate blend of style and skill.

LCDM0610LE02H-Q-0-WW

Easy to assemble



1. Firmly fix the bracket to the stand with 4 bolts.
(Using a 4mm L-shaped wrench, tighten the bolt by turning it clock-wise.)
2. Latch the Monitor set onto the stand by carefully inserting the bolts attached on the cover-rear into the stand's bracket holes.
3. Firmly fix the Monitor set to the bracket using 4 bolts.
(Using a 5mm L-shaped wrench, tighten the bolt by turning it clock-wise.)

Dimensions

unit: mm



Specifications

	Width	Series
Net	79.5kg	PDP Monitor PPM42M6H / PPM50M6H
Gross	89.0kg	LCD Monitor 400PX/400PXn/460PX/460PXn

Dimensions

	Width	Depth	Hight
Net	740.0 mm	840.0 mm	1452.0 mm
Gross (Packaging)	1400.0 mm	840.0 mm	360.0 mm

- Meeting International Standard IEC 60950-1

* Design and Specifications are subject to change without notice.

Distributed by:

